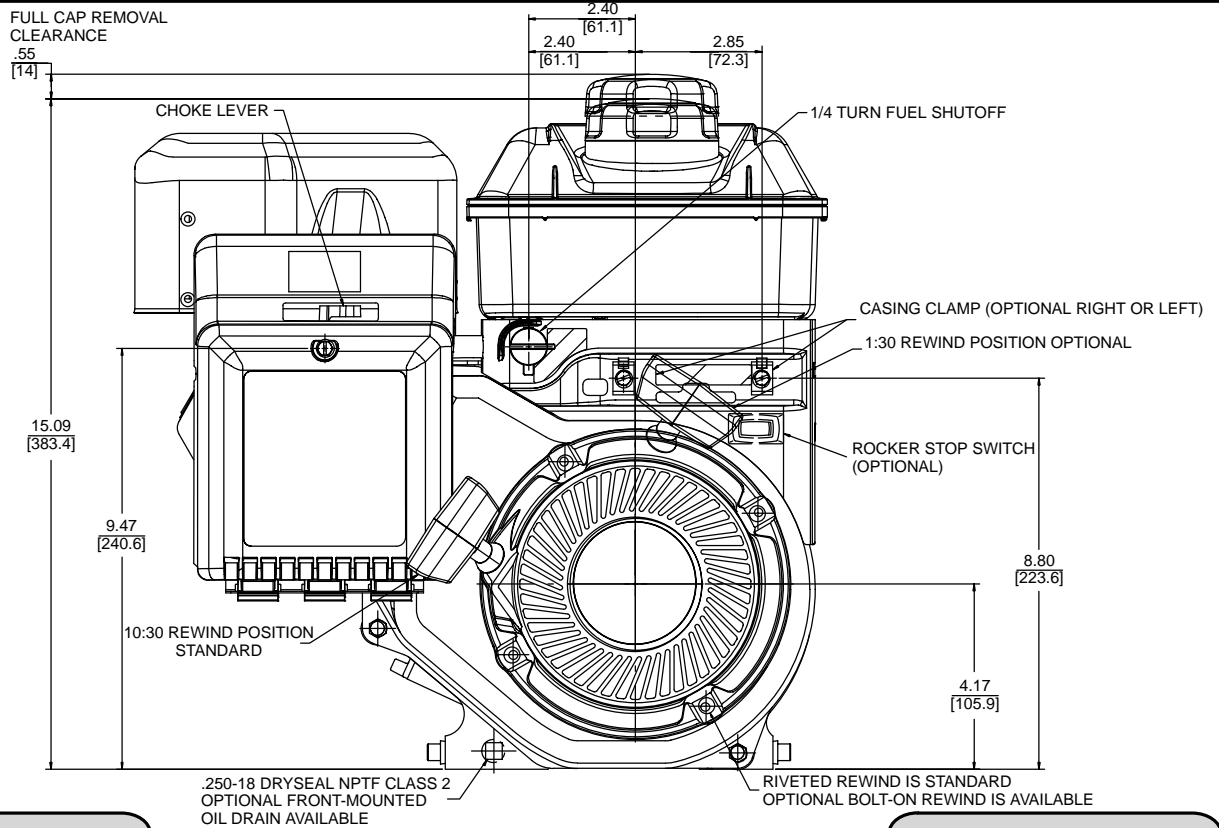




INTEK™ OHV 190 & 206 I/C

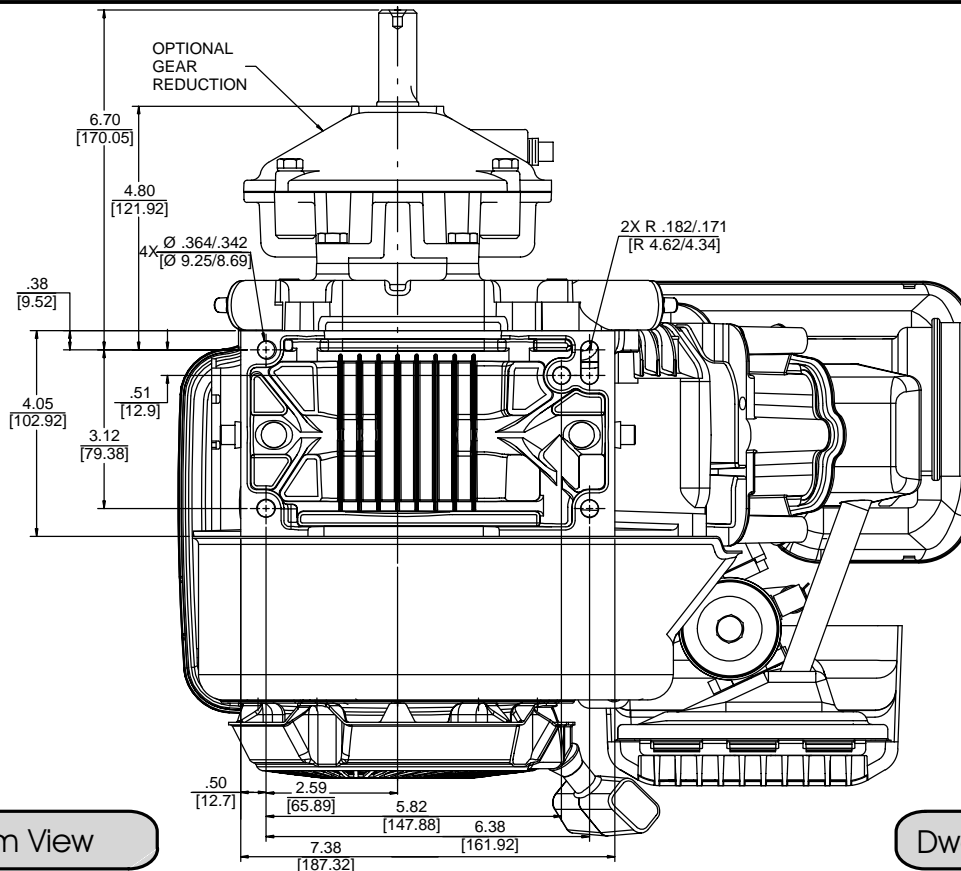
5.5 HP 110400
6.5 HP I/C® 121400

Outline Drawings



Front View

Dwg 110400000016



Bottom View

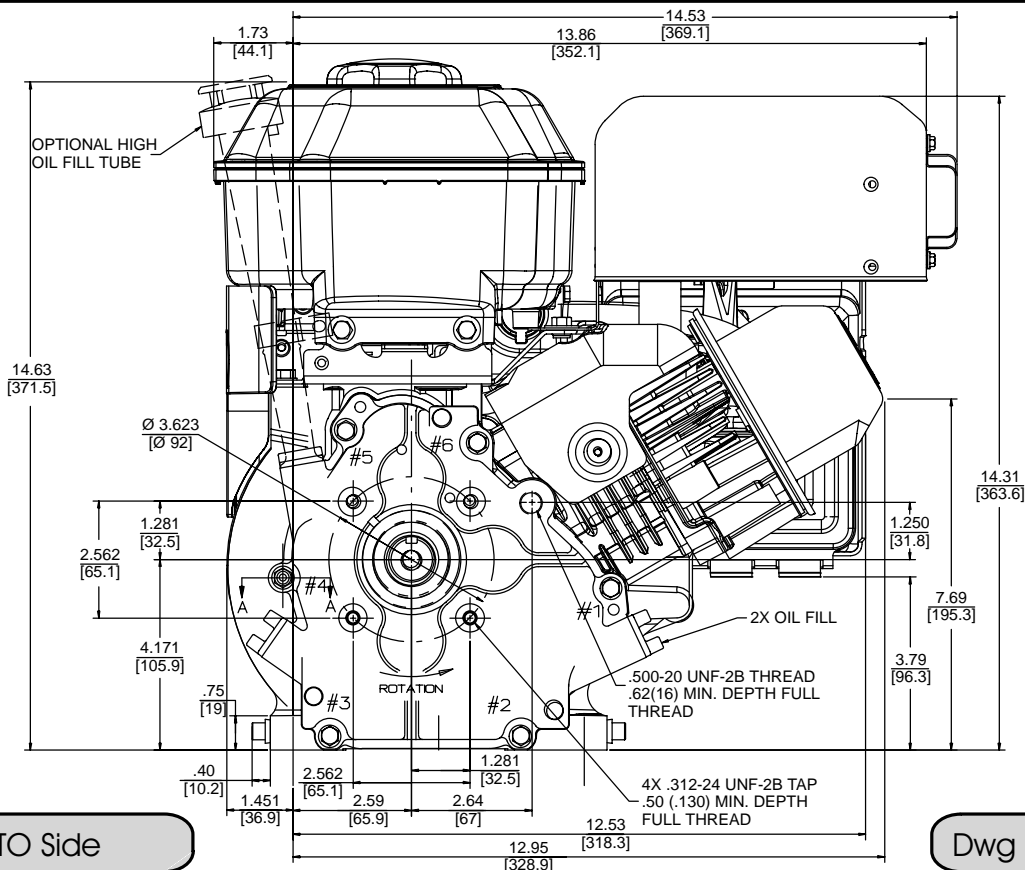
Dwg 110400000016



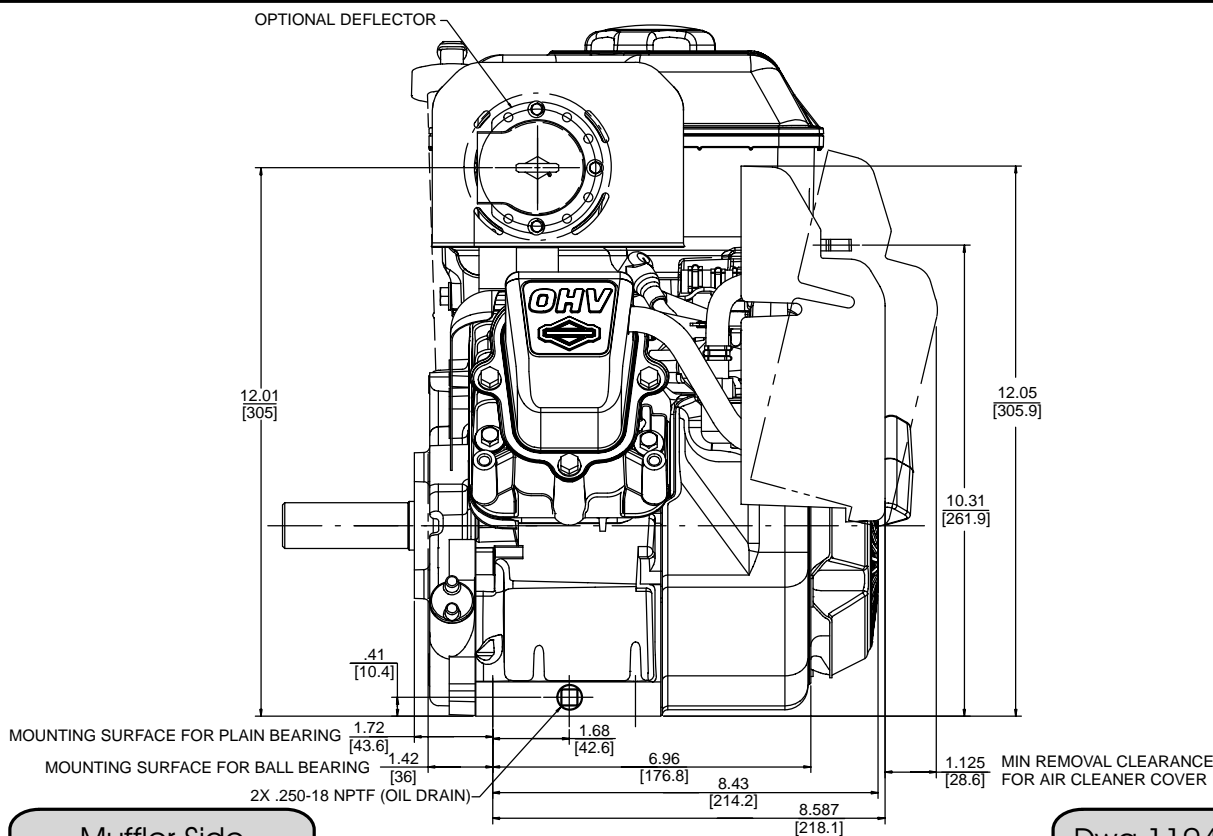
INTEK™ OHV 190 & 206 I/C

5.5 HP 110400
6.5 HP I/C® 121400

Outline Drawings



Dwg 110400000016



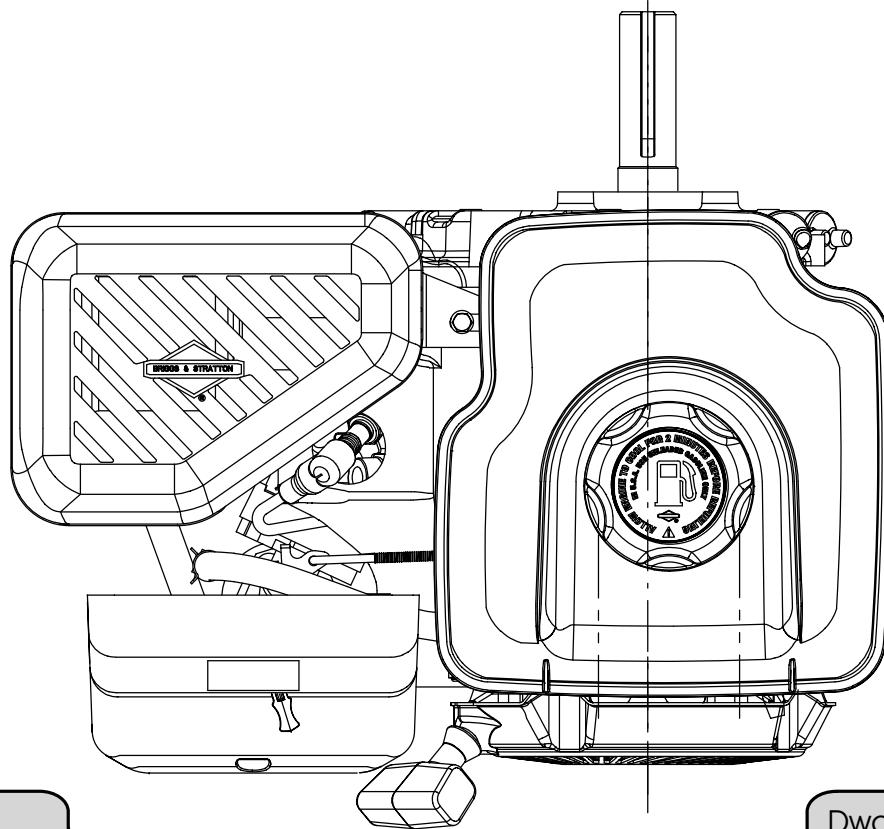
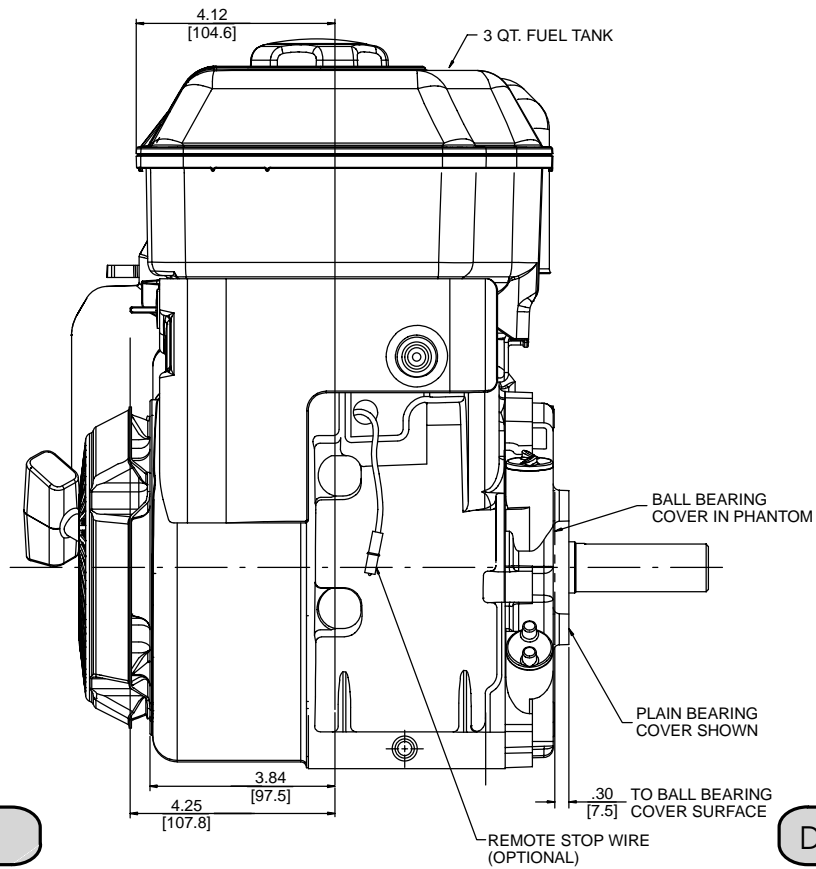
Dwg 110400000016



INTEK™ OHV 190 & 206 I/C.

5.5 HP 110400
6.5 HP I/C® 121400

Outline Drawings



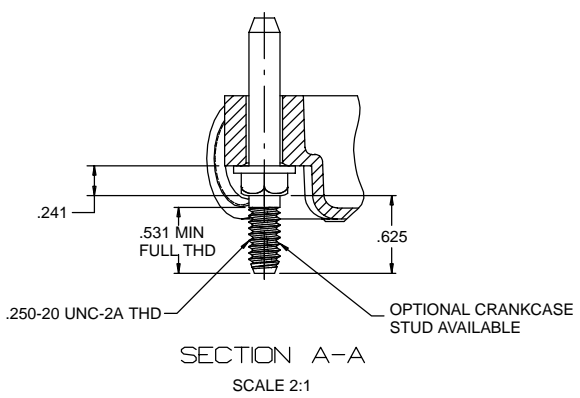
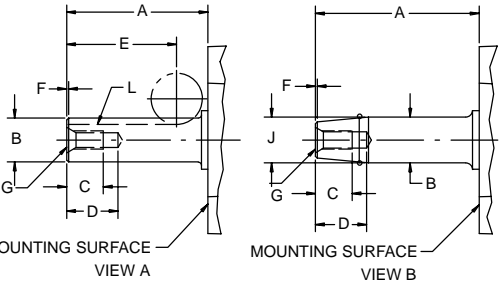
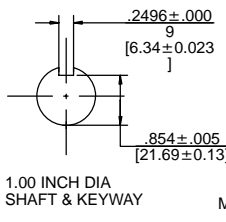
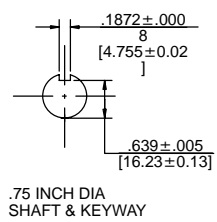
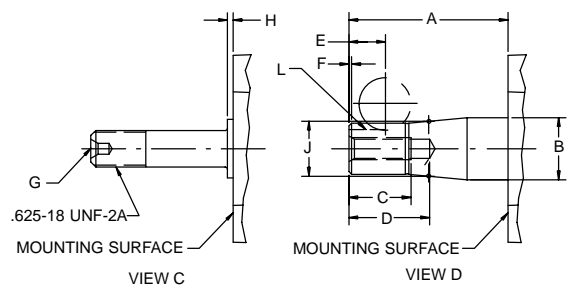
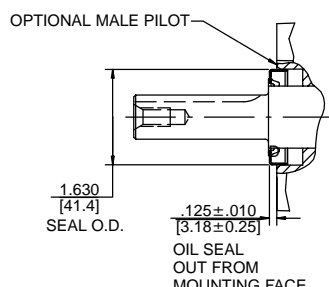
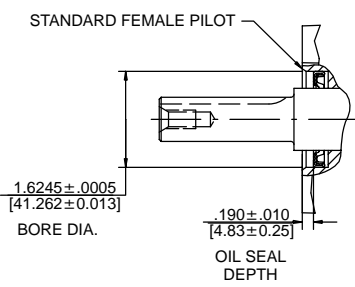


INTEK™ OHV 190 & 206 I/C

5.5 HP 110400
6.5 HP I/C® 121400

Crankshaft Data

MODEL 11 CRANKSHAFT PART NO.	MODEL 12 CRANKSHAFT PART NO.	A	B	C	D	E	F	G	H	J	K	L	SQUARE KEY SIZE (W X H)	SEE VIEW
BALL BEARING														
693131	693122	2.4260 ^{+0.0319} _{-0.0250} [61.62]	Ø .6245 ^{±.0005} [15.86]	—	.9375 ^{±.0625} [23.81]	—	—	#5 CENTER DRILL	0.1420 ^{+0.0319} _{-0.0250} [3.61]	—	—	—	—	C
693132	693123	2.8190 ^{+0.0319} _{-0.0250} [71.60]	Ø .7807 ^{±.0005} [19.83]	.625 MIN [15.88]	.875 MAX. [22.23]	—	45° X .031 ± .010 [.79]	.312-24 UNF-2B [7.92]	0.1420 ^{+0.0319} _{-0.0250} [3.61]	Ø .750 GAGE [19.05]	2.0640 ^{+0.0219} _{-0.0230} [52.43]	—	—	B
693133	693124	2.4340 ^{+0.0319} _{-0.0250} [61.82]	Ø .7495 ^{±.0005} [19.04]	.625 MIN [15.88]	.875 MAX. [22.23]	1.875 ±.020 [47.63]	45° X .031 ± .010 [.79]	.312-24 UNF-2B [7.92]	0.1420 ^{+0.0319} _{-0.0250} [3.61]	—	—	—	3/16 X 3/16	A
PLAIN BEARING														
693135	693126	2.8190 ^{+0.0325} _{-0.0250} [71.60]	Ø .7807 ^{±.0005} [19.83]	.625 MIN [15.88]	.875 MAX. [22.23]	—	45° X .031 ± .010 [.79]	.312-24 UNF-2B [7.92]	0.1420 ^{+0.0325} _{-0.0250} [3.61]	Ø .750 GAGE [19.05]	2.0640 ^{+0.0225} _{-0.0230} [52.43]	—	—	B
693136	693127	2.4340 ^{+0.0325} _{-0.0250} [61.82]	Ø .7495 ^{±.0005} [19.04]	.625 MIN [15.88]	.875 MAX. [22.23]	1.875 ±.020 [47.63]	45° X .031 ± .010 [.79]	.312-24 UNF-2B [7.92]	0.1420 ^{+0.0325} _{-0.0250} [3.61]	—	—	—	3/16 X 3/16	A
693137	693128	1.4570 ^{+0.0325} _{-0.0250} [37.00]	Ø .7495 ^{±.0005} [19.04]	.875 MIN [22.23]	1.125 MAX. [28.58]	.875 ±.020 [22.23]	45° X .031 ± .010 [.79]	.375-24 UNF-2B [9.53]	0.1420 ^{+0.0325} _{-0.0250} [3.61]	—	—	—	3/16 X 3/16	A
693138	693129	2.8860 ^{+0.0325} _{-0.0250} [73.30]	Ø .9995 ^{±.0005} [25.39]	.938 MIN [23.83]	1.375 MAX. [34.93]	2.250 ±.020 [57.15]	45° X .047 ± .016 [1.19]	.375-24 UNF-2B [9.53]	0.1420 ^{+0.0325} _{-0.0250} [3.61]	—	—	—	1/4 X 1/4	A
693139	693130	2.7170 ^{+0.0325} _{-0.0250} [77.04]	Ø 1.0621 ^{±.0004} [26.98]	1.060 MIN [26.92]	1.375 MAX. [34.93]	.625 ±.020 [15.88]	45° X .047 ± .016 [1.19]	.375-24 UNF-2B [9.53]	—	Ø .9375 GAGE [23.81]	1.3610 ^{+0.0225} _{-0.0230} [34.44]	—	3/16 X 3/16	D



Crankshaft Data

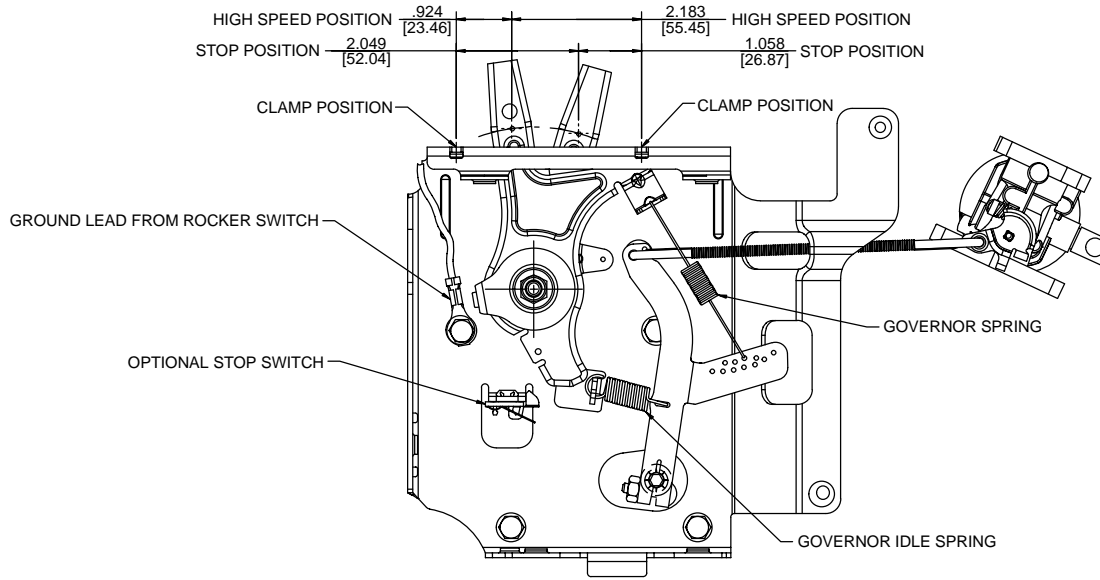
Dwg 110400000016



INTEK™ OHV 190 & 206 I/C

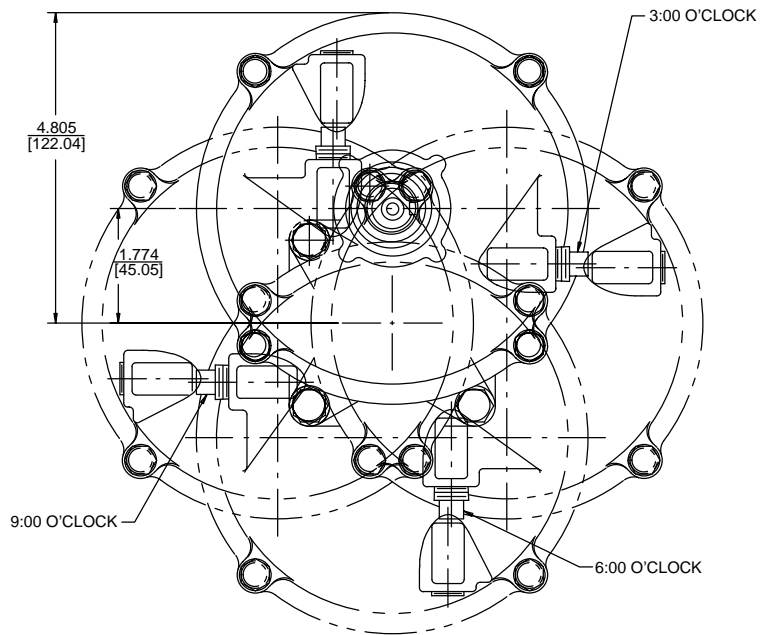
Controls/Gear Case Positions

5.5 HP 110400
6.5 HP I/C® 121400



Speed Control Travel

Dwg 110400000016



GEAR CASE POSITIONS

Gear Case Positions

Dwg 110400000016

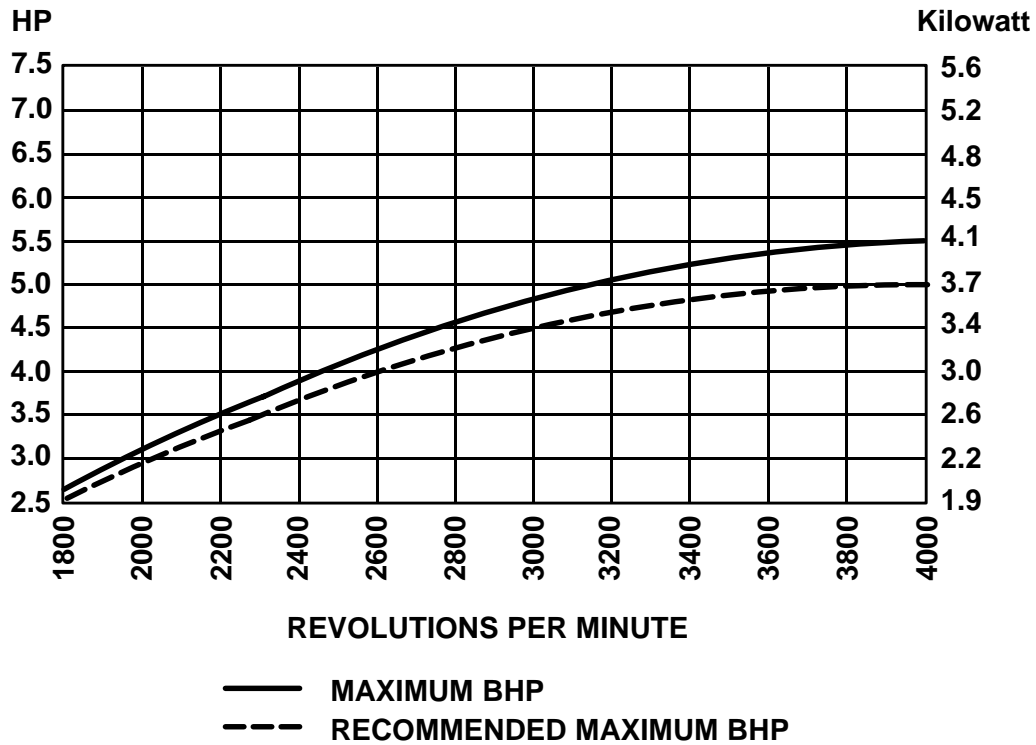


INTEK™ OHV 190 I/E

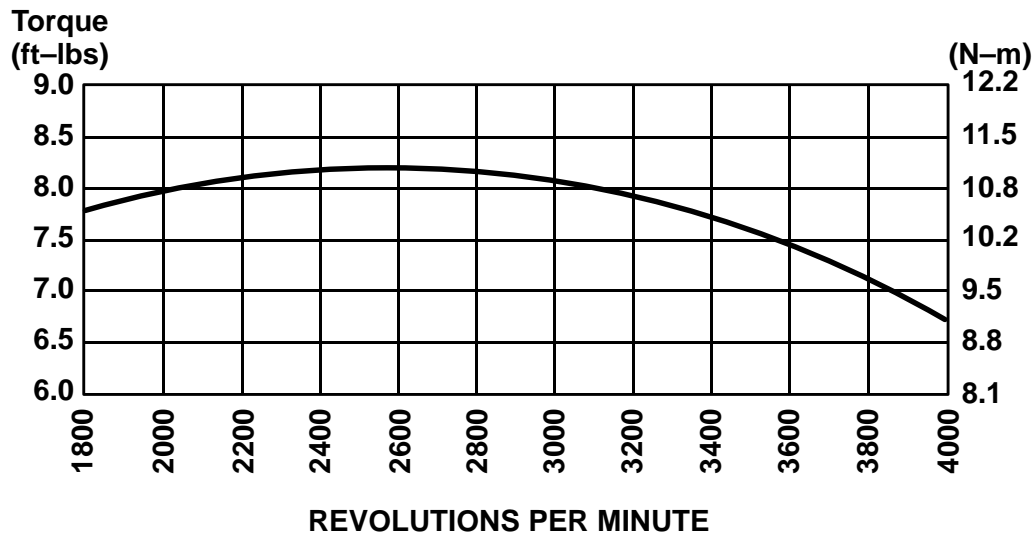
5.5 HP 110400

Performance Data

Power Curve



Torque Curve



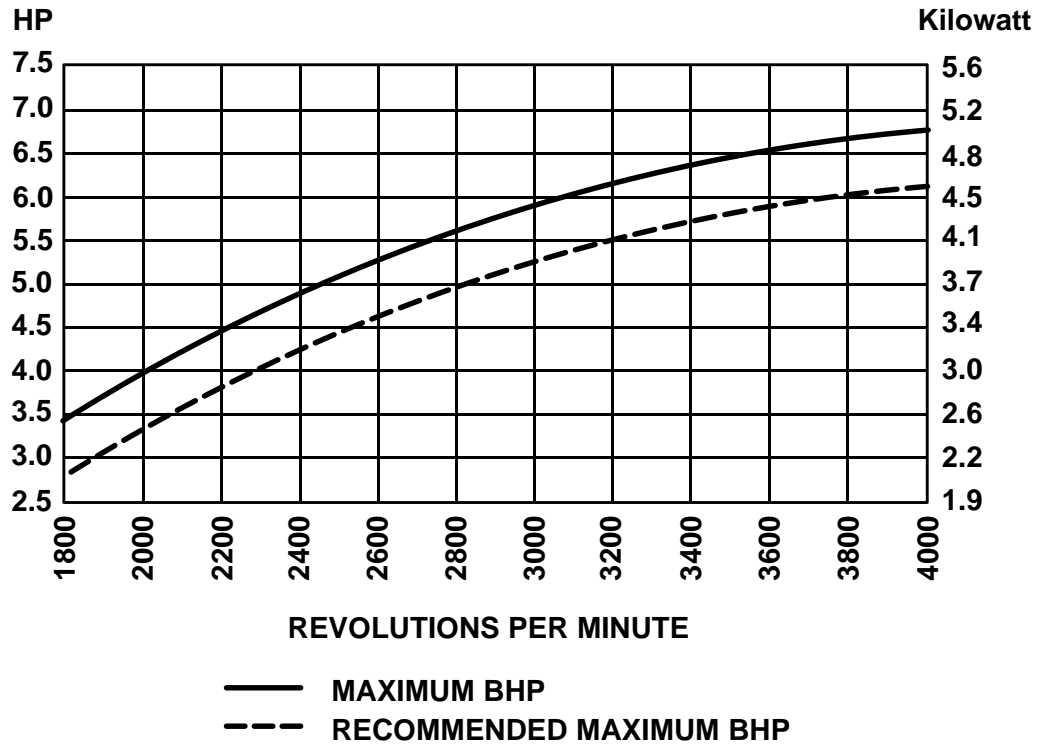


INTEK™ OHV 206 I/E

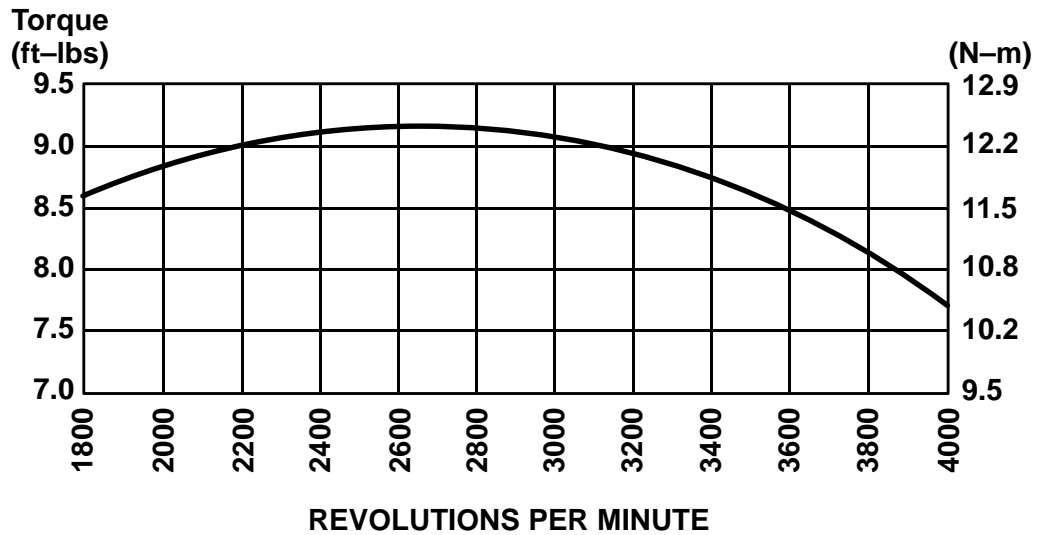
6.5 HP I/C® 121400

Performance Data

Power Curve



Torque Curve



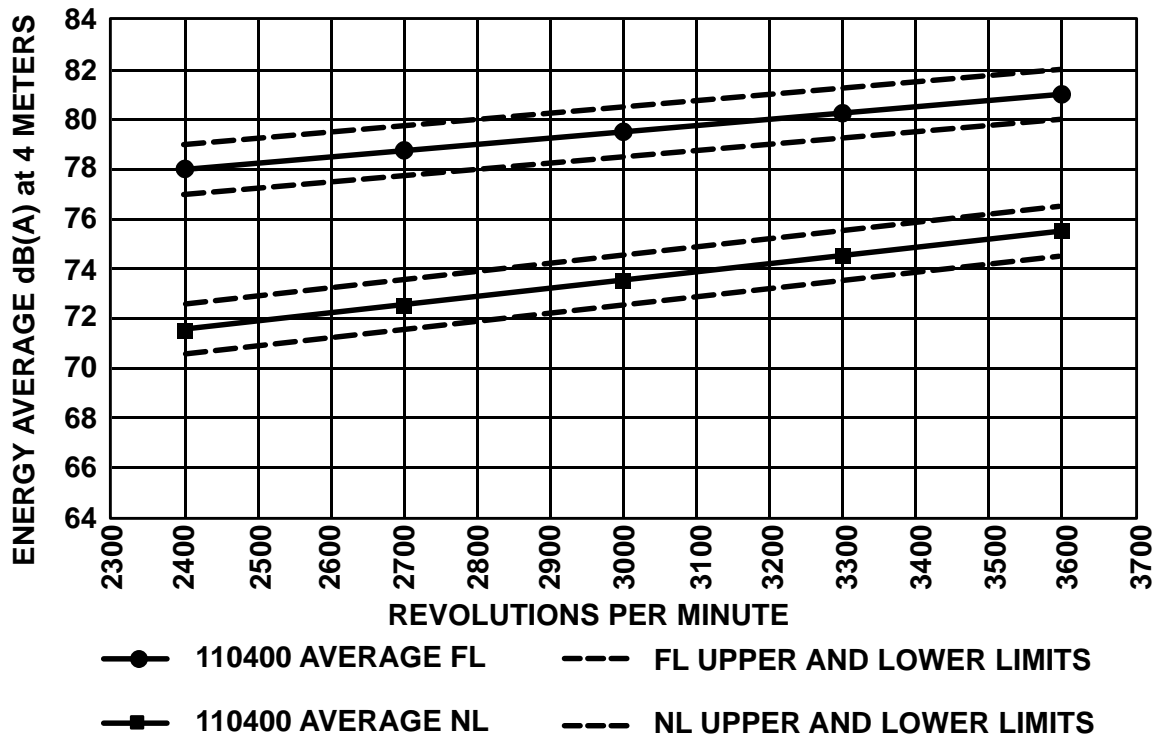


INTEK™ OHV 190 & 206 I/C

5.5 HP 110400
6.5 HP I/C® 121400

Sound Performance

Sound Chart



Sound Chart

